

# **PRC presentations for Planning Review Committee Monday 15 October 2018**

**www.oxford.gov.uk**



## **Agenda item number, description and page numbers**

- |    |  |         |
|----|--|---------|
| 3. | 18/01173/FUL: "Swan School", The Harlow Centre, Raymund Road, Oxford, OX3 0PG        | 3 - 44  |
| 4. | 18/01697/FUL: Temporary buildings at The Harlow Centre, Raymund Road, Oxford OX3 0PG | 45 - 50 |

This page is intentionally left blank

# Planning Review Committee Presentation

[www.oxford.gov.uk](http://www.oxford.gov.uk)



**18/01173/FUL**

3

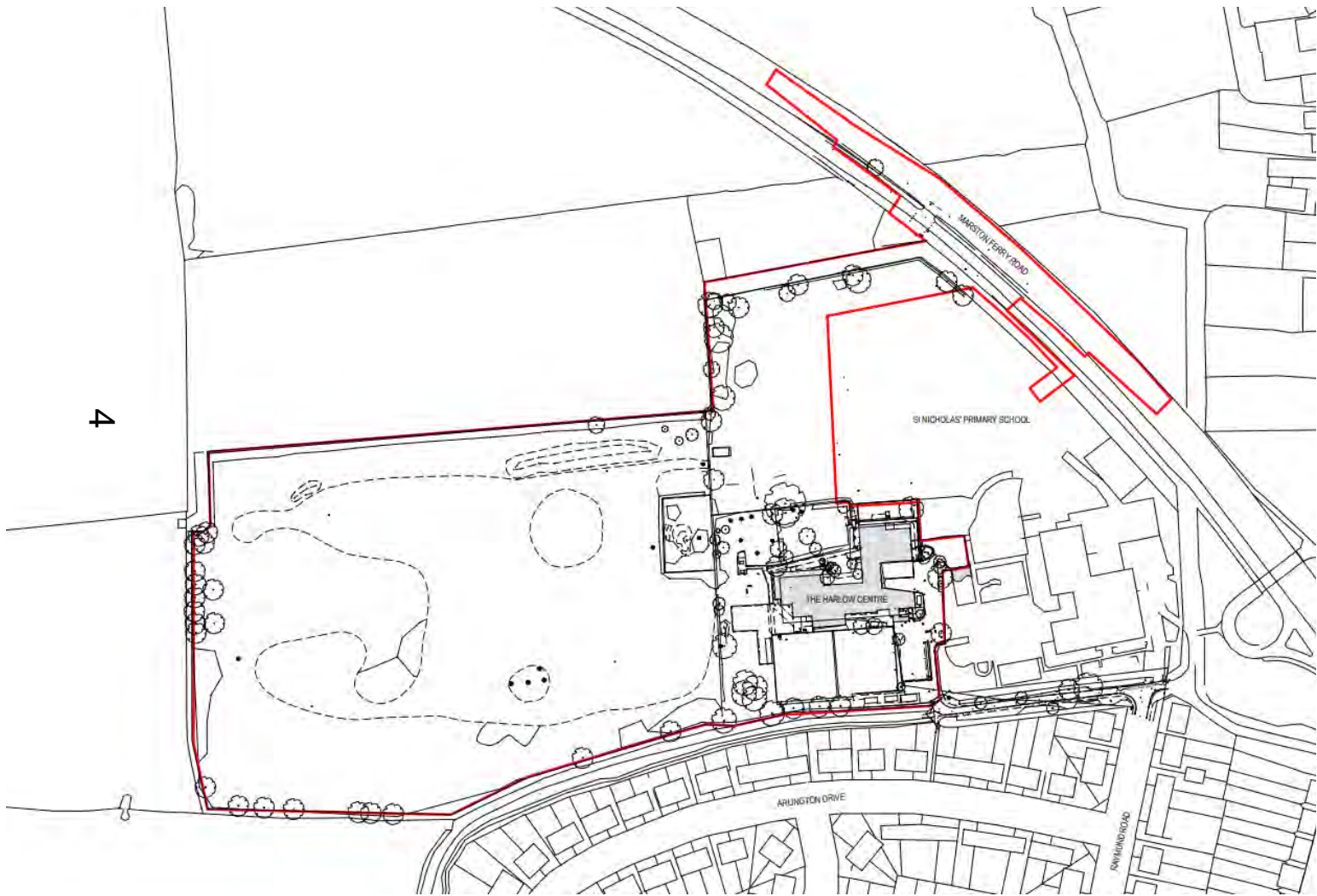
## **The Harlow Centre**

Application for Swan School and  
Meadowbrook College



# Site plan

4



[www.oxford.gov.uk](http://www.oxford.gov.uk)





# Approach to Meadowbrook College from Raymund Road





# Entrance to Meadowbrook College and bridleway





# Existing Meadowbrook College

DWDBROOK  
GE  
Centre





# Bridleway and Marston Brook



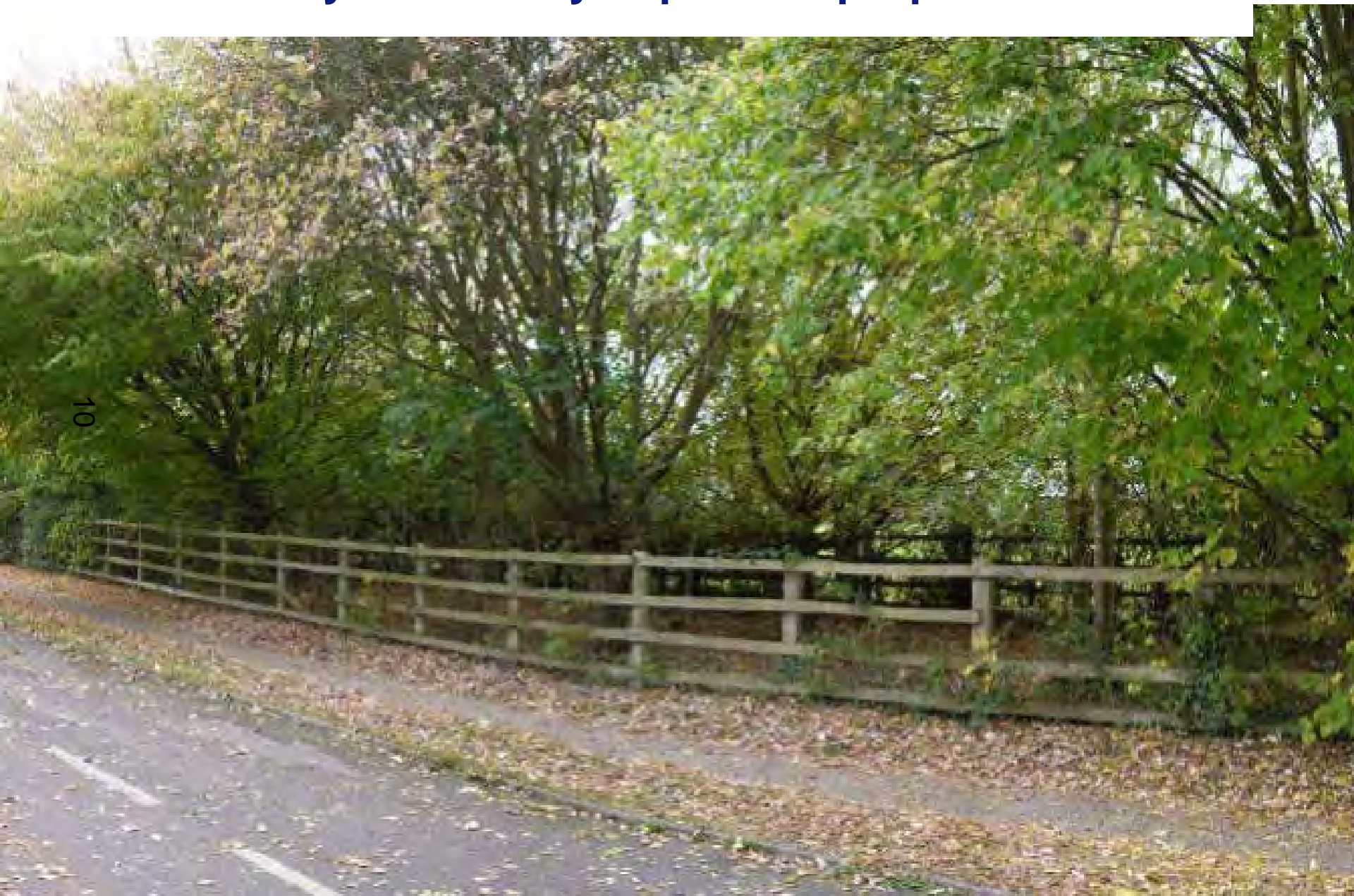


**View from south of the site looking east**

6



## View from cycle/footway at point of proposed access





# Crossing on cycle/footway





# Marston Ferry Road cycle/footway





# Marston Ferry Road cycle/footway close to junction with Oxford Road





# Junction of Cherwell Drive, cycle/footway & Oxford Road





# View north from inside Meadowbrook College onto St Nicholas playing fields

15



# View from telephone mast looking south-west

16





# Field lying to the west of Meadowbrook College, looking north

17





## Tree belt along south of the site by bridleway





## Tree belt along south of the site by bridleway

19





# Field lying to the west of Meadowbrook College, looking west

20





# St Nicholas Primary playing fields and ecology hut

21





**Field lying to the west of Meadowbrook College,  
looking east**

22



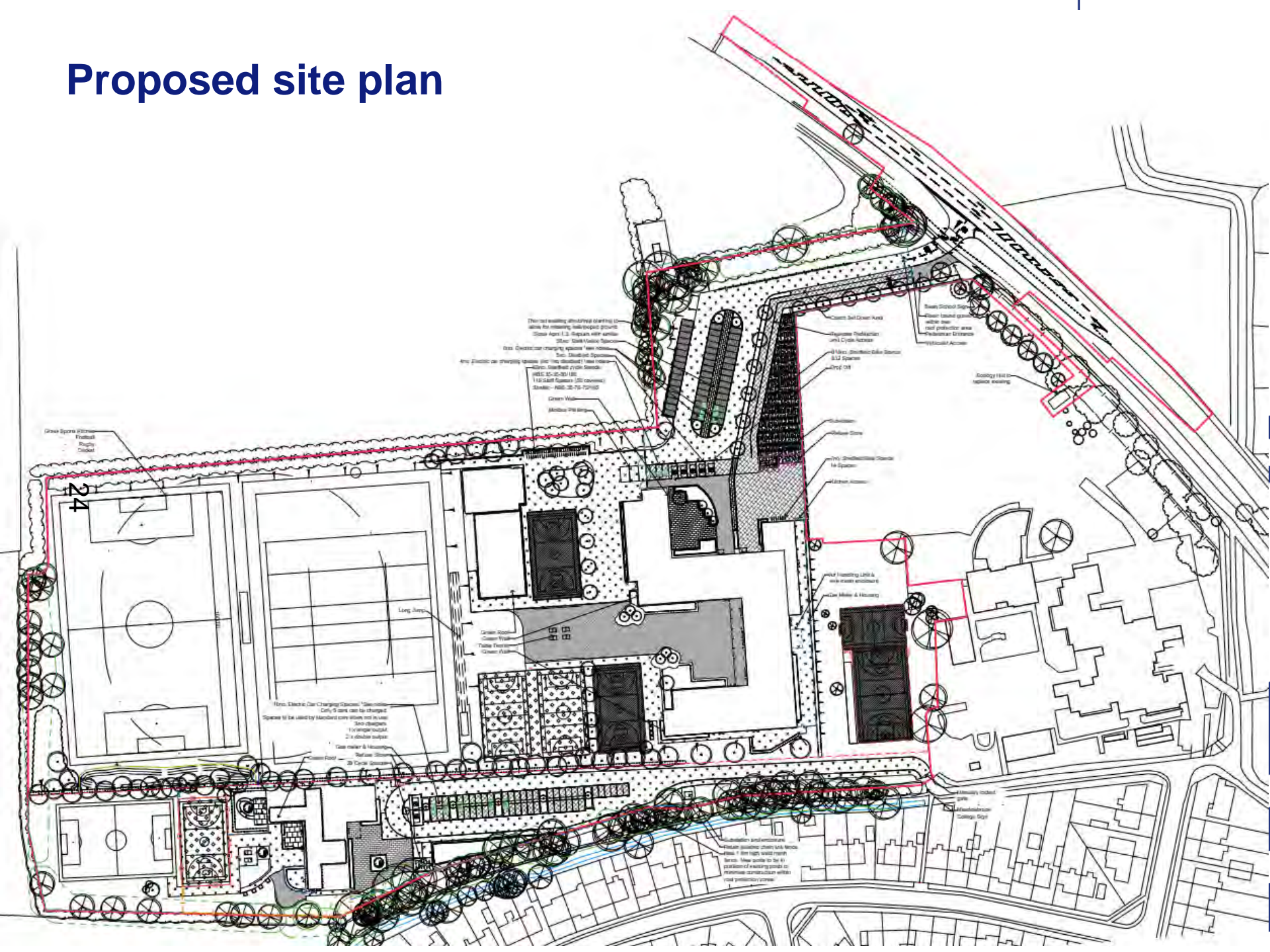


# Arlington Drive properties





## 24



# Proposed ground floor plans – Swan School

[www.oxford.gov.uk](http://www.oxford.gov.uk)





# Proposed ground floor plans – Swan School

[www.oxford.gov.uk](http://www.oxford.gov.uk)



26

# Proposed first floor plans – Swan School

[www.oxford.gov.uk](http://www.oxford.gov.uk)



# Proposed first floor plans – Swan School

[www.oxford.gov.uk](http://www.oxford.gov.uk)





# Proposed second floor plans – Swan School

[www.oxford.gov.uk](http://www.oxford.gov.uk)



1 SECOND FLOOR 1 of 2  
1:100



# Proposed second floor plans – Swan School

[www.oxford.gov.uk](http://www.oxford.gov.uk)



30



① SECOND FLOOR 2 of 2  
1:100

# Proposed elevations – Swan School



31  
1 North Elevation  
1:100



2 East Elevation  
1:100



## Proposed elevations – Swan School



1 West Elevation  
1:100



② South Elevation  
1 : 100

9. *Unusual Twists: Climbing*
10. *FFC Symposium: Escalating Twists: Climbing*
11. *Green Field*
12. *Climbing*
13. *Powerful Climbing*
14. *FFC Symposium: Powerless Climbing*
15. *Unconquered: Powerless Climbing: Climbing*
16. *FFC Symposium: Powerless Climbing*
17. *FFC Symposium: Powerless Climbing*
18. *Unconquered: Powerless Climbing*
19. *Reading*
20. *1st World Series: Powerless Climbing*
21. *Unconquered: Powerless Climbing: Climbing*
22. *Unconquered: Powerless Climbing*
23. *Unconquered: Powerless Climbing*
24. *Unconquered: Powerless Climbing*
25. *Unconquered: Powerless Climbing*
26. *Unconquered: Powerless Climbing*
27. *Unconquered: Powerless Climbing*

# Proposed elevations – Swan School sports hall



① SH East Elevation  
1:100

33



② SH North Elevation  
1:100

# Proposed ground floor plans – Meadowbrook College

[www.oxford.gov.uk](http://www.oxford.gov.uk)



# Proposed plans – Meadowbrook College



1 PROPOSED FIRST FLOOR PLAN  
1:100





# Proposed elevations – Meadowbrook College

[www.oxford.gov.uk](http://www.oxford.gov.uk)



36  
1 Proposed North Elevation  
1:100



2 Proposed East Elevation  
1:100





# Proposed elevations – Meadowbrook College

[www.oxford.gov.uk](http://www.oxford.gov.uk)



① South Elevation Proposed  
1:100



② West Elevation Proposed  
1:100







# Proposed access – visualisation





# Proposed access – visualisation





# Visualisation – Swan School

41





# Visualisation – Meadowbrook College



# Proposed access operation (Mon-Thurs)

43

	Gate Closed	Gate Open	Wardens W-1 Warden WW-2 Wardens	
Staff Arrivals				0700
				0715
				0730
				0745
Cherwell School starts at 0830			W	0800
			W	0815
Swan School Drop Off			WW	0830
Swan School start at 0915 - ped / cycle volumes high			WW	0850
			WW	0900
				0915
Cherwell School finishes at 1500			W	1500
			W	1515
Gate Open during school day			W	1530
				1545
				1600
				1615
			WW	1630
Swan School finishes at 1645 on Mon - Thurs			WW	1645
Swan School pick up			WW	1700
Staff departures				1715
				1730
				1745
				1800

This page is intentionally left blank



# Planning Review Committee Presentation

[www.oxford.gov.uk](http://www.oxford.gov.uk)



**18/01697/FUL**

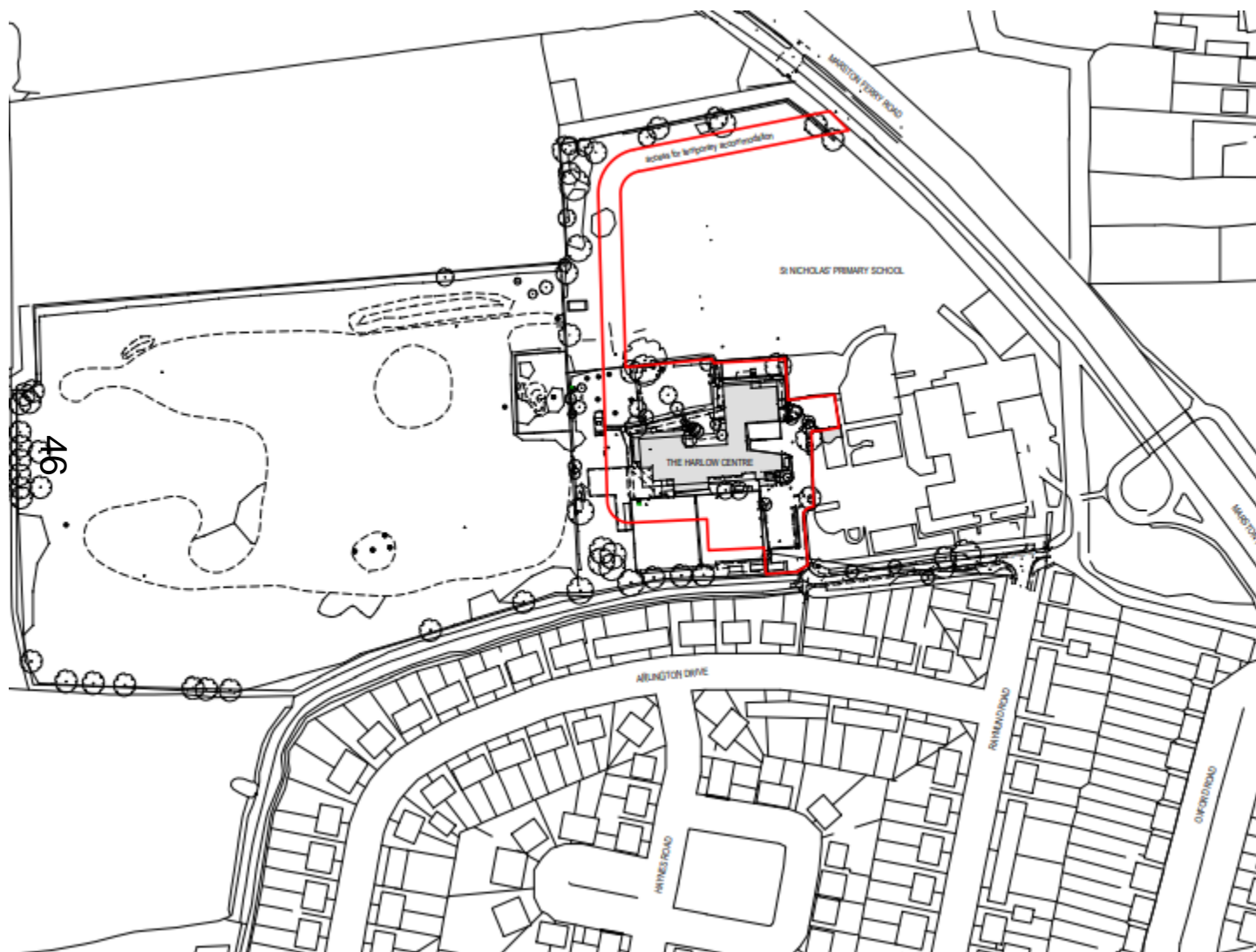
45

## **The Harlow Centre**

Application for Temporary Accommodation  
for Meadowbrook College



# Site plan



[www.oxford.gov.uk](http://www.oxford.gov.uk)



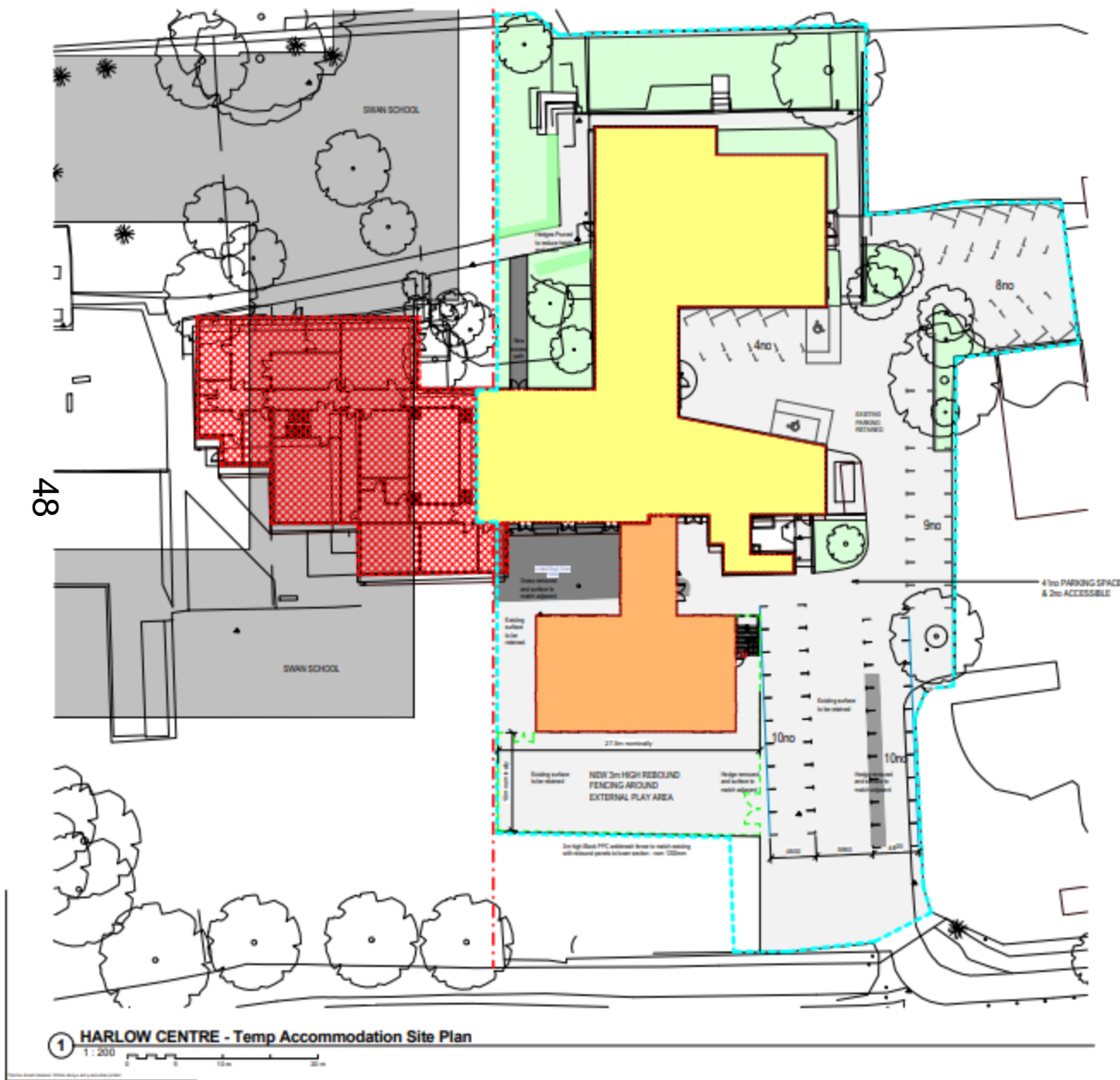
# Existing Meadowbrook College

47





# Proposed site plan

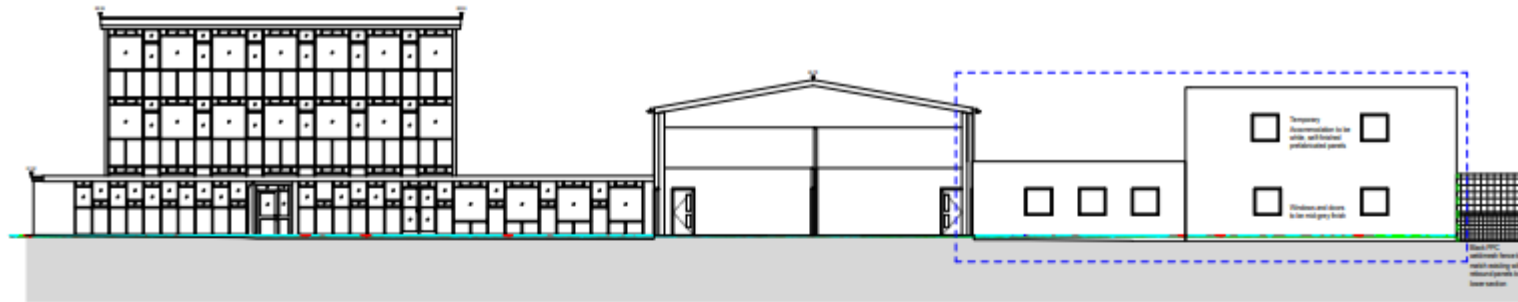


www.oxford.gov.uk



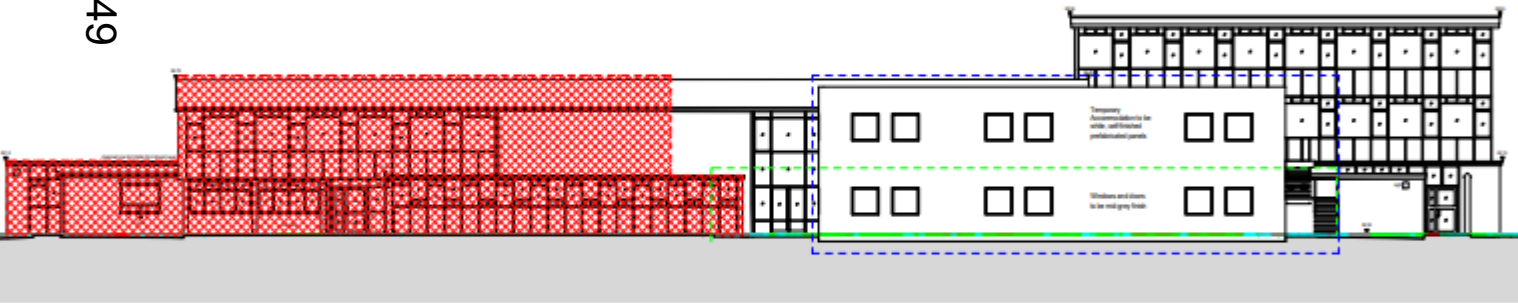
# Proposed elevations

www.oxford.gov.uk



1 Temps West Elevation  
1 : 100

49



2 Temps South Elevation  
1 : 100



3 Temps East Elevation  
1 : 100





This page is intentionally left blank